



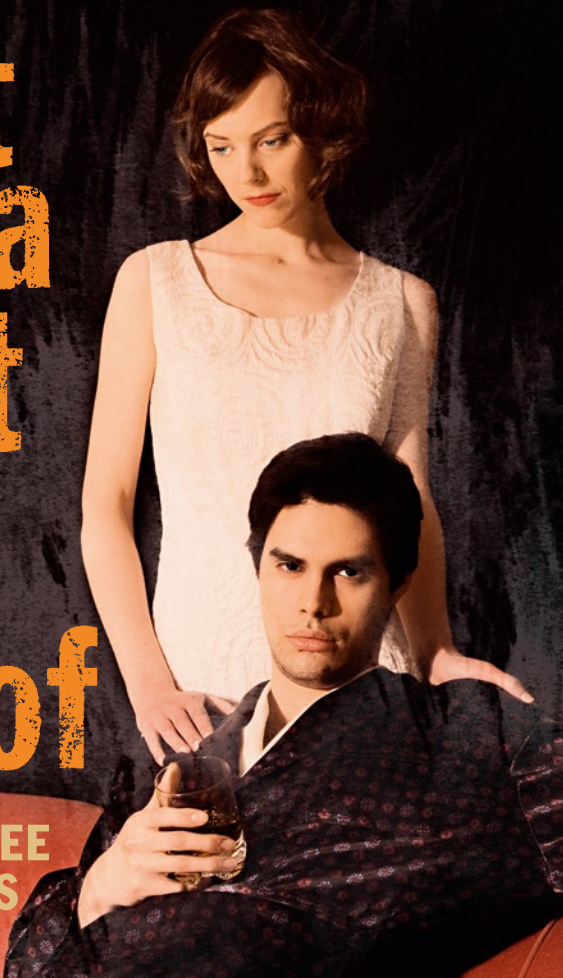
The Hamburg Players e.V.

P R E S E N T I N E N G L I S H

Cat on a Hot Tin Roof


by
**TENNESSEE
WILLIAMS**

Directed by
Mathilde Berry



6 – 9 and 13 – 16 May 2009

Wednesdays to Saturdays at 7.30 pm, matinee performance on Saturday
9 May only at 3.30 pm · Prices from € 10 to € 15 · Preview Wednesday
6 May, all tickets € 10 · Tickets: tickets@hamburgplayers.de, Hotline
040/713 13 99, Theaterbüro 040/29 26 65, Theaterkasse Schumacher
040/34 30 44 or at the box office on the evening of the performance ·
Theater an der Marschnerstraße, Marschnerstr. 46, 22081 Hamburg

 THEATER AN DER MARSCHNERSTRASSE



The Hamburg Players e.V.

PRESENT IN ENGLISH

Cat on a Hot Tin Roof

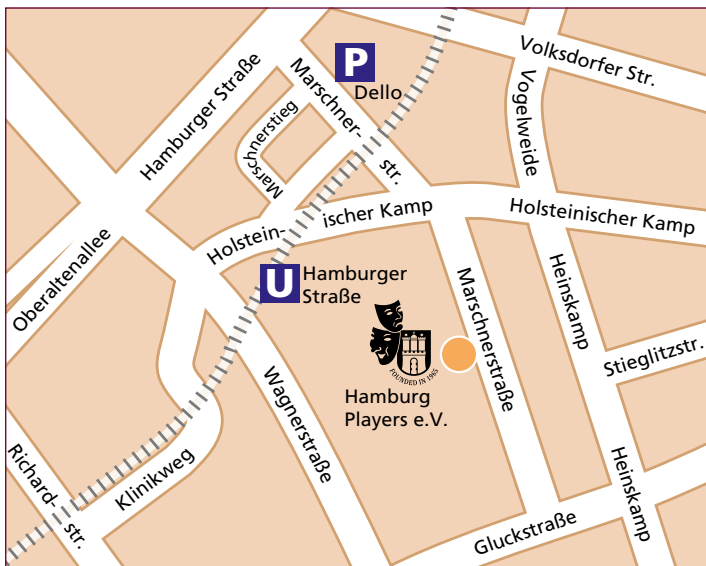
by **TENNESSEE WILLIAMS**

Directed by **Mathilde Berry**

It is a hot sticky summer in the Mississippi Delta. The wealthy Pollitt family has gathered to celebrate patriarch Big Daddy's 65th birthday. But below the surface, turbulent emotions are brewing. What Big Daddy and Big Mama don't yet know is that this will be Big Daddy's last birthday – he is dying of cancer. Their eldest son, Gooper, and his wife, Mae, are scheming to get younger son, Brick, cut out of the inheritance.

Brick, an ex-footballer, has taken to drink since the death of his best friend, Skipper. Brick is estranged from his beautiful wife, Maggie, who is fighting tooth and nail to win back his love. A layer of mendacity – of lies – has built up over the family's disappointments and insecurities. Who is going to be bold enough to start telling the truth now? Is there enough love left to save?

How to find the theatre



Theater an der Marschnerstraße, Marschnerstr. 46 (3 minutes on foot from U-Bahn Hamburger Straße). The Opel Dello car park is open to theatre-goers until half an hour after the performance finishes.